

Updating the Leapfrog Bolt software by SD card

Introduction

This guide helps you to manually update the Leapfrog Bolt 3D printer software when your printer is not connected to the internet. For the update procedure, you will need to remove the internal SD card and “flash” the new software on it. For this you will need:

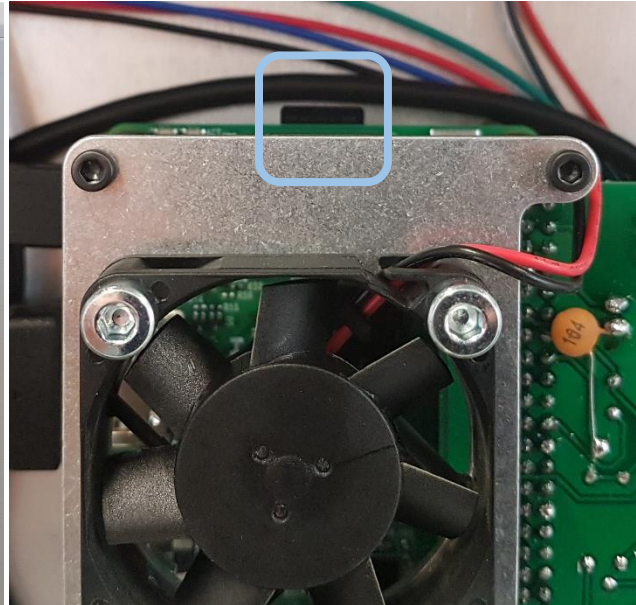
- A computer with an integrated or external SD card reader
- A micro SD card adapter
- A 3mm hex key
- [Etcher](#) software

Removing the SD card

1. Make sure your Leapfrog Bolt 3D printer is completely switch off and the power cord is disconnected. Remove the back plate of your printer by untightening the indicated bolts with a 3mm hex key.

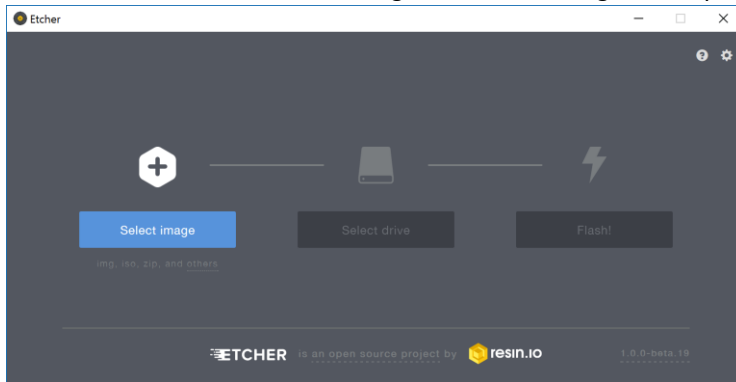


2. Locate and remove the SD card as indicated below.

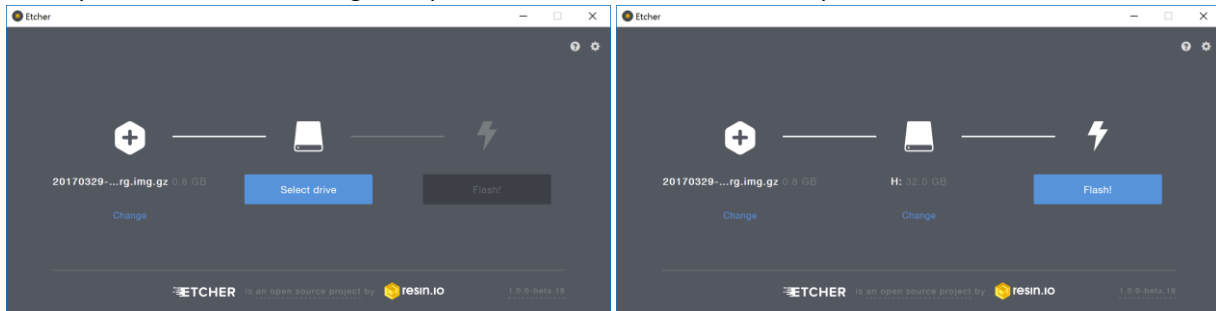


Updating the software

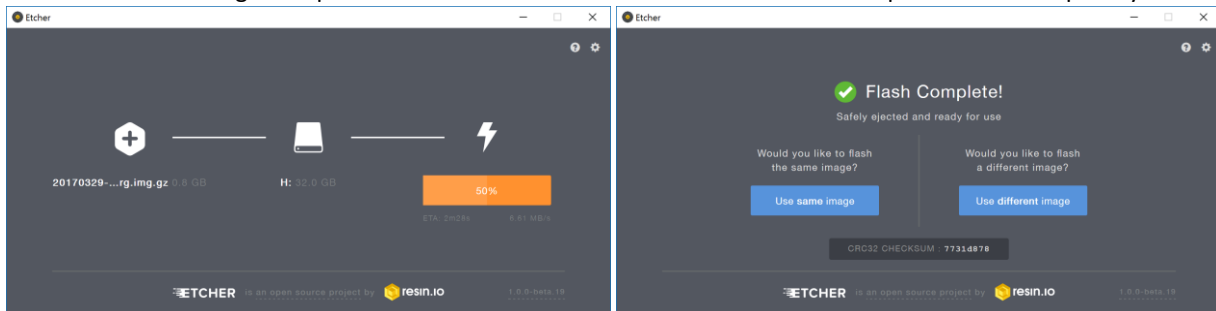
1. Download the latest *image* and save it to a convenient place on your computer.
2. Download and install Etcher
<https://etcher.io/>
3. Insert the original SD card provided with your Leapfrog Bolt 3D printer into your computer. If your computer does not have an SD card slot, you can also use an external card reader. You may need to use a micro SD adapter.
4. Start Etcher and click on 'Select image'. Locate the image file on your computer.



5. When you have located the image file, your SD card should be automatically selected. If not, click on 'Select drive'.

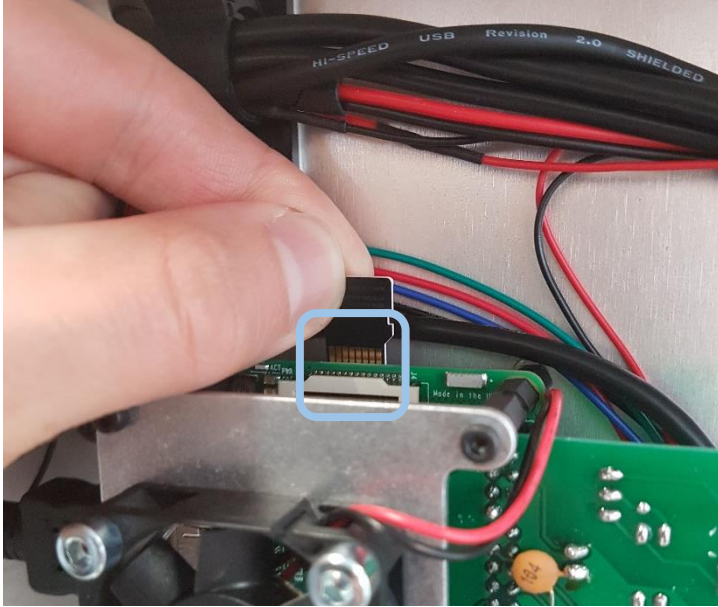


6. Click on 'Flash!' to begin the process. Be sure not to remove the SD card until the process has completely finished.



Re-inserting the SD card

1. Remove the SD card from the computer and insert it into your 3D Printer. Make sure the contact points are facing away from the printer.



2. Mount the back plate to the printer and switch the power on.
3. You are all done!

During the first startup you may see the printer rebooting a couple of times. This is normal behavior. After a few minutes your printer is updated and ready to print.